

# **USB HSPA Modem**

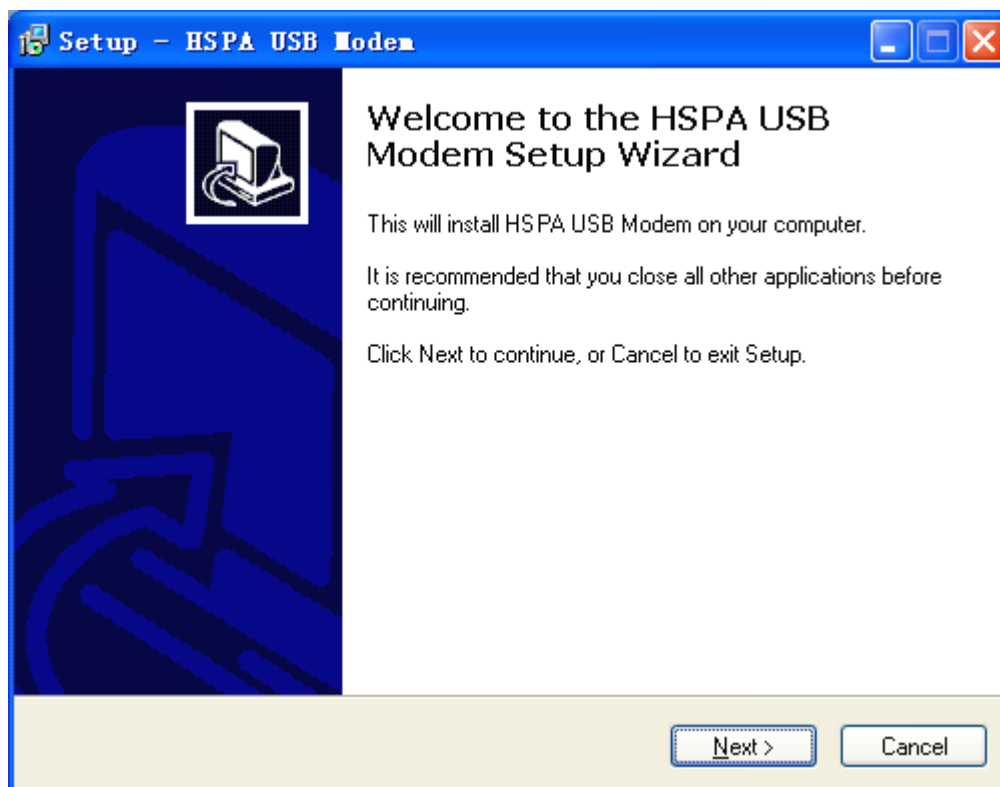
## **User Manual**

Congratulations on your purchase of this USB HSPA Modem. The readme file helps you surf the Internet, send and receive SMS, manage contacts and use many other functions with the installation of dialup software.

## **I. Using HSPA Modem On Windows**

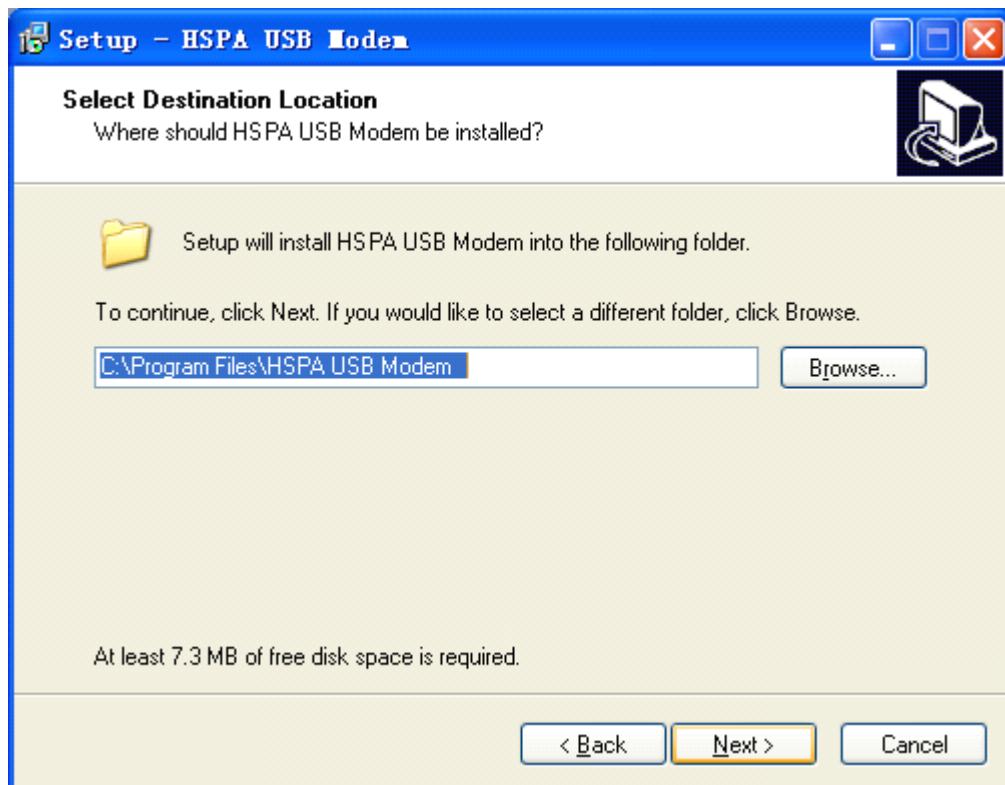
### **Installation of HSPA dialup application**

1. Insert the modem into a free USB port of your PC
2. The ZeroCD pops up. Double click to install the dialup program
3. Follow on-screen instructions to complete the installation

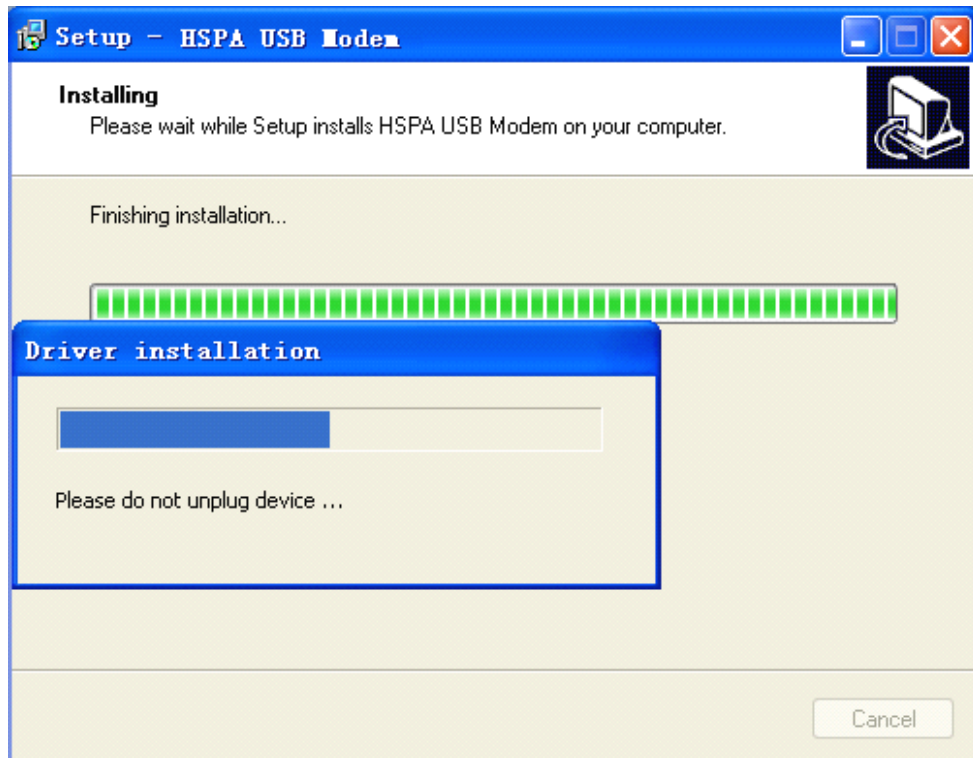


Setup welcome page, click 'Next' to start installing.

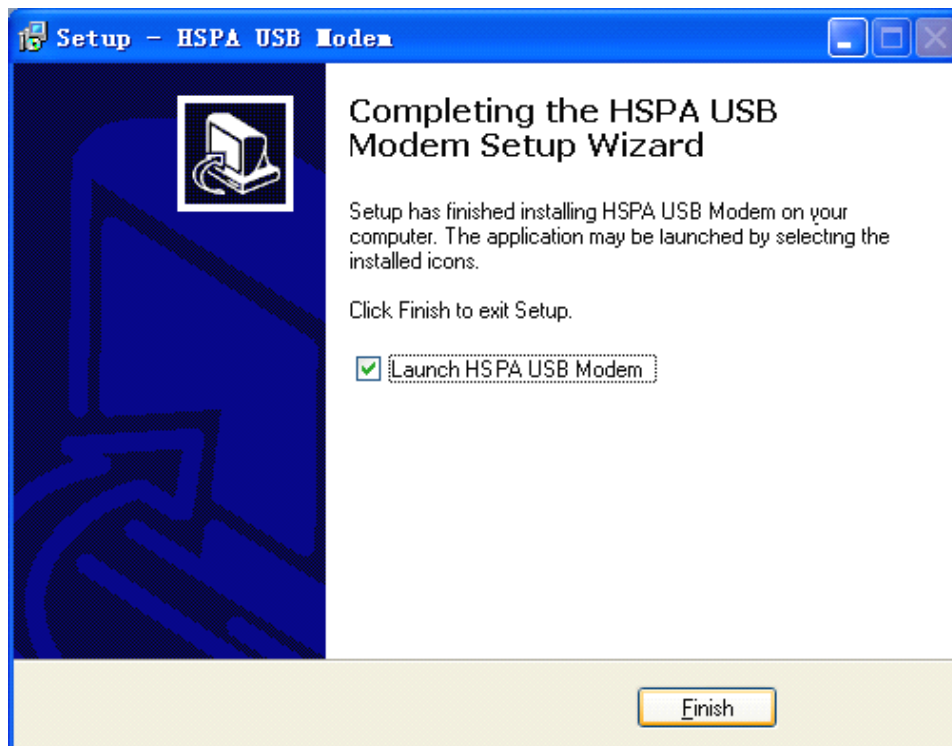
Select destination folder for the application. Please use the default folder to make life easier and click ‘*Next*’.



Select Start Menu folder name. The default is HSPA USB Modem; you can change it to whatever you like.

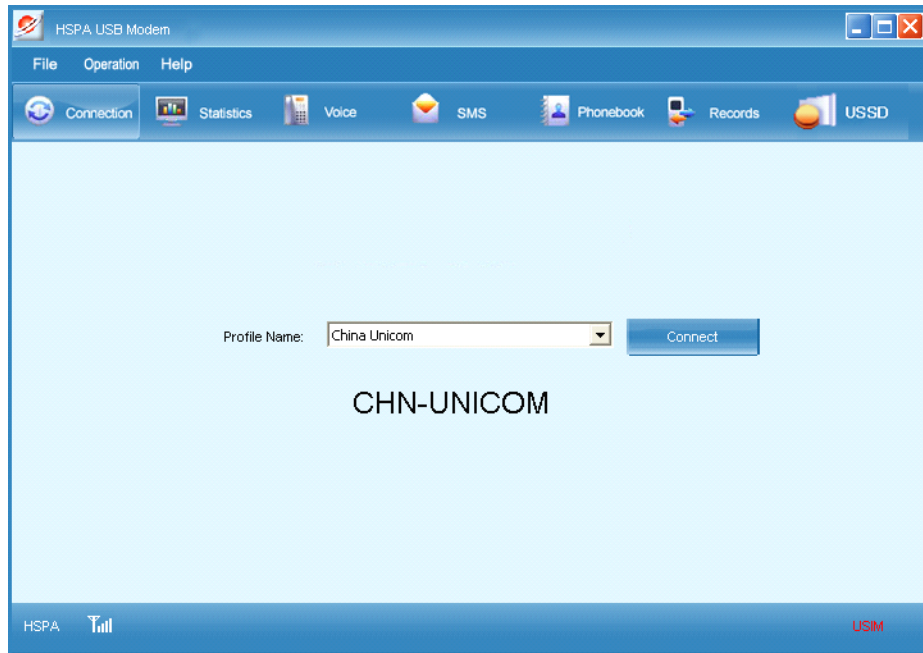


Setup starts copying files and installing modem drivers. Please do not unplug the modem and wait for the installation to complete.

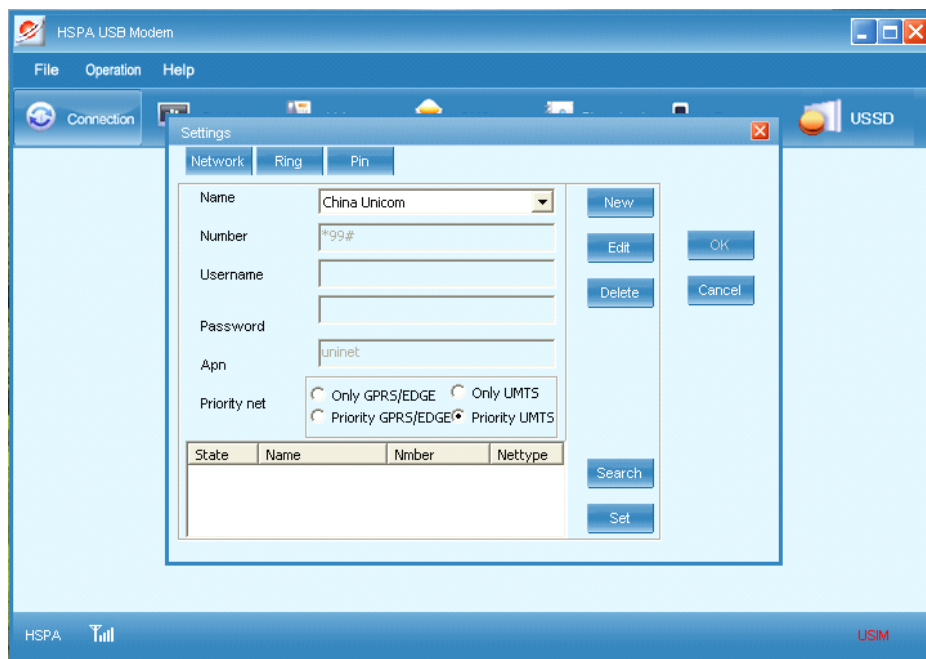


Installation is complete. You can launch the HSPA dialup program to surf the Internet now.

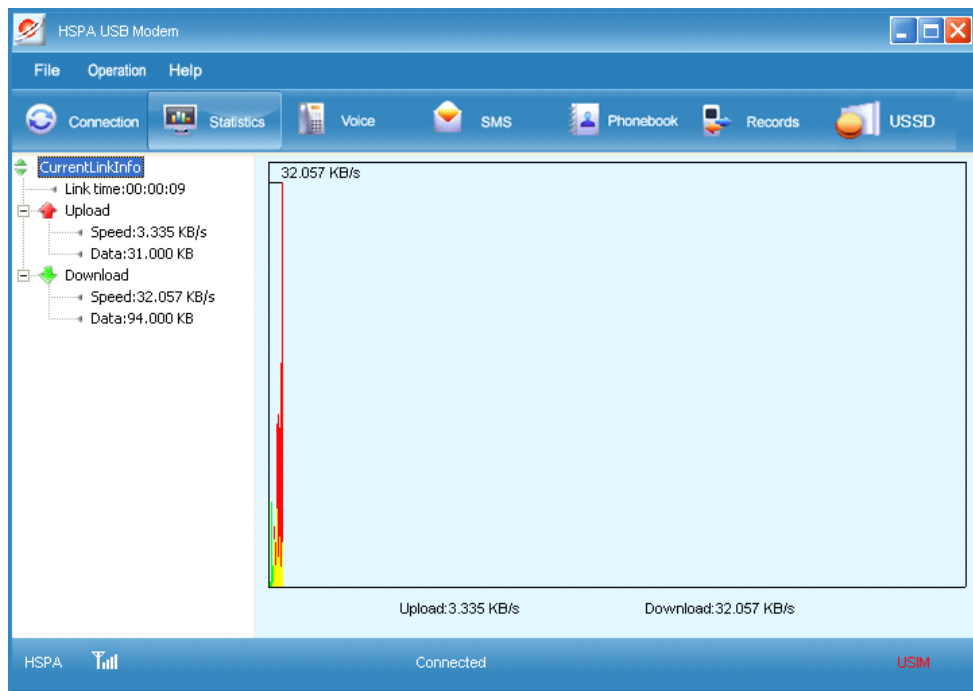
## Features



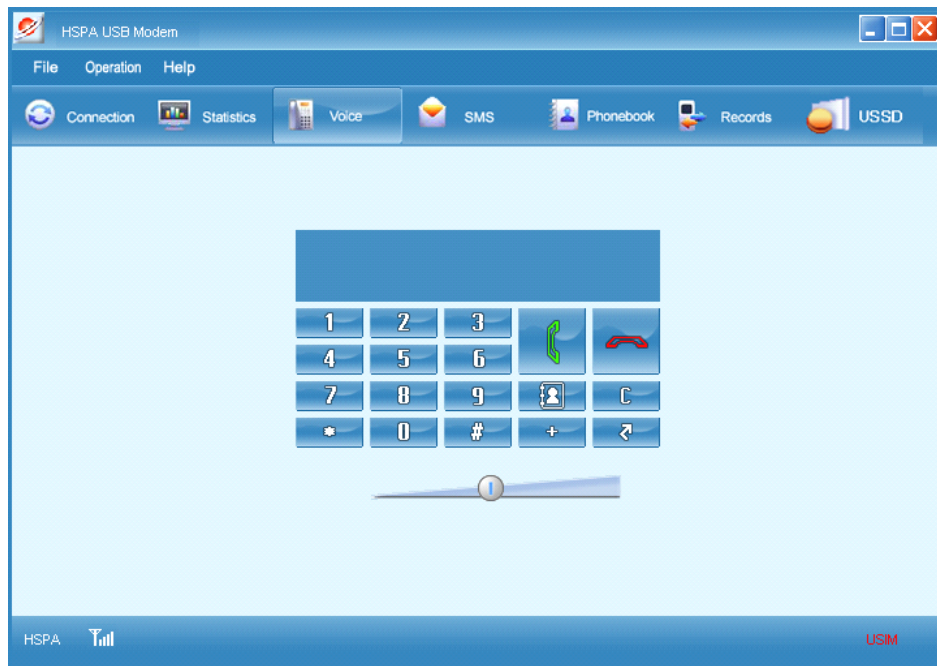
The main interface of HSPA dialup application. There is a connection button in the middle. Click it to create a wireless connection as desired. The button changes into *Disconnect* after a connection is established; click it to get disconnected.



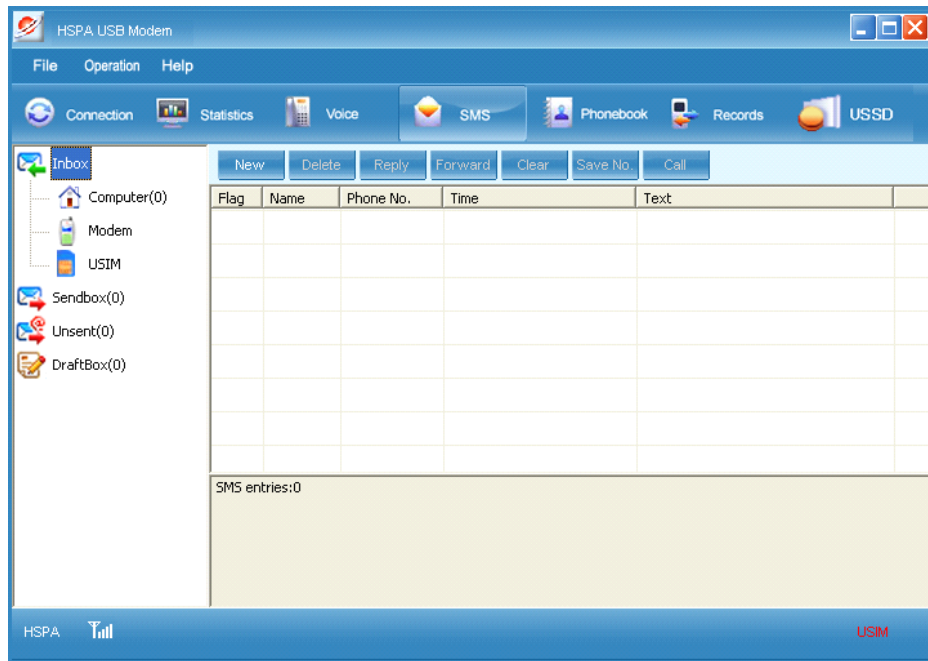
Click File - Settings to bring up the settings window. You can set APN data, DNS servers and modem modes here.



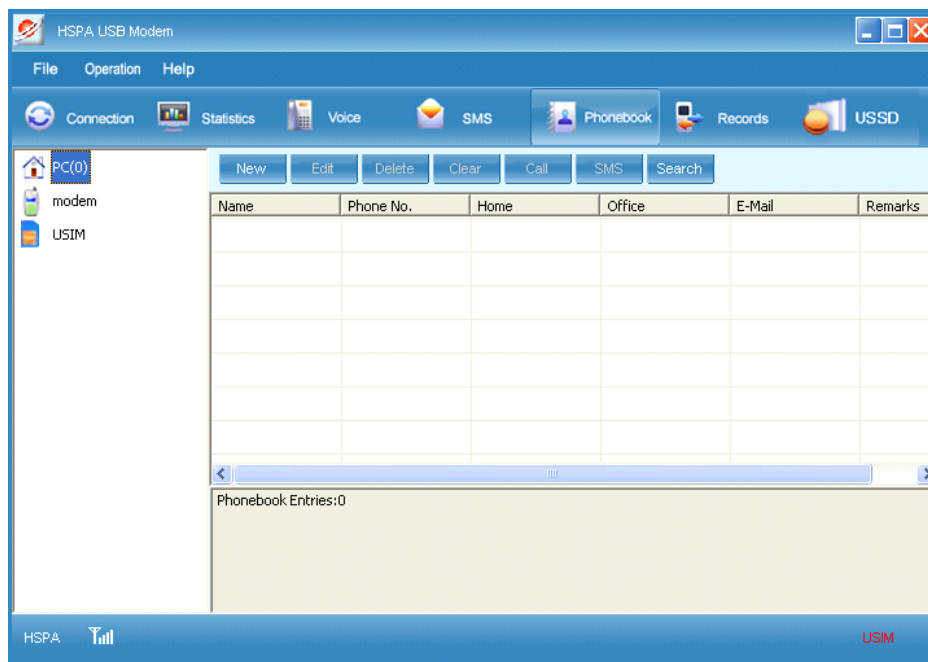
The *Statistics* page displays usage information such as upload speed, download speed and connection duration.



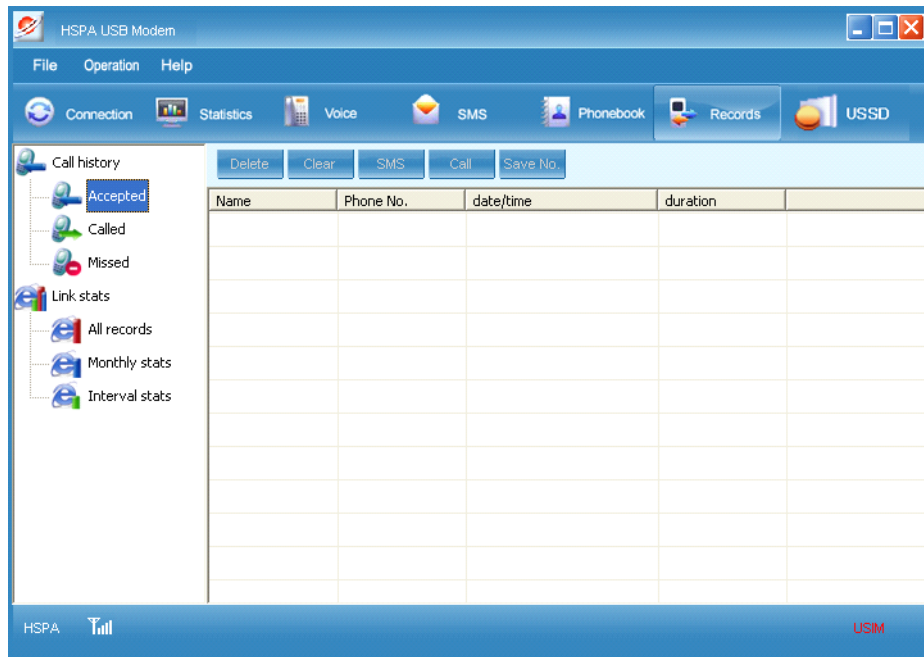
The *Voice* page enables you to make a phone call.



On the *SMS* page, you can send and receive text messages. You can choose PC hard disk, modem or USIM to store your SMS as desired.



The *Phonebook* page lets you manage your contacts. Once again, you can store your contacts to PC hard disk, modem or USIM.



You can view voice call history and link statistics on the *Records* page.

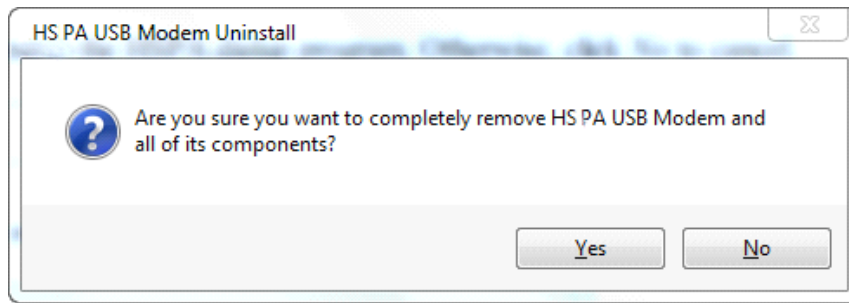


The *USSD* page enables you to execute USSD commands.

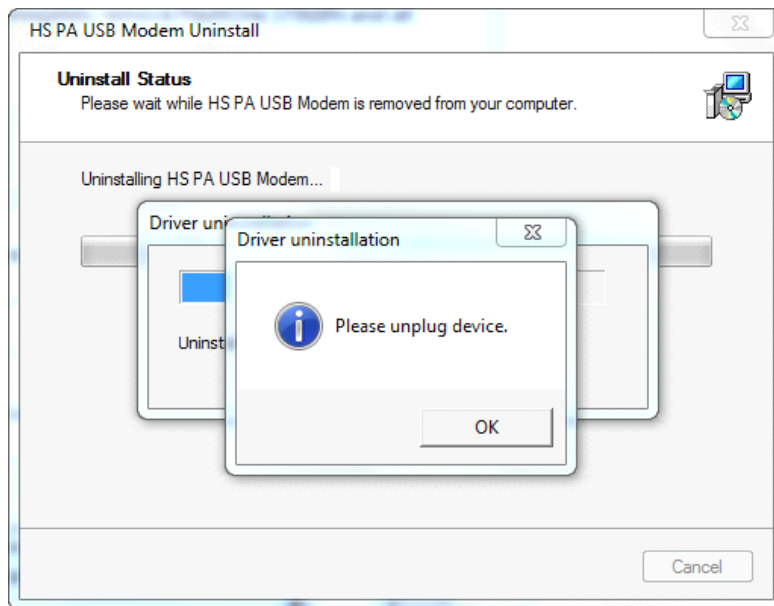
### **Uninstallation of HSPADialup application**

Go to HSPA folder under Start Menu, and click *Uninstall* to start uninstalling.

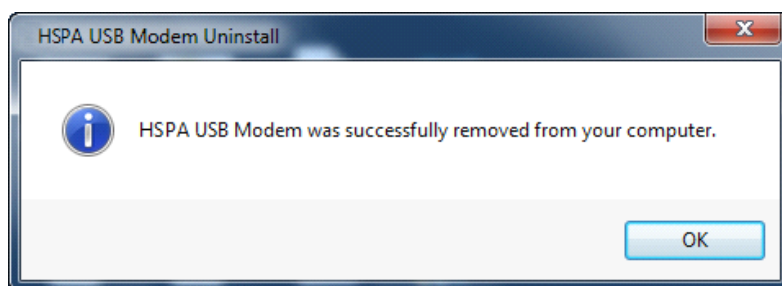




Click *Yes* if you want to completely remove the HSPA dialup program. Otherwise, click *No* to cancel.



The uninstallation process begins after you click *Yes*. You will be prompted to unplug the HSPA modem if it's not disconnected.



Uninstallation is complete.

## II. Using HSPA Modem On Mac OSX

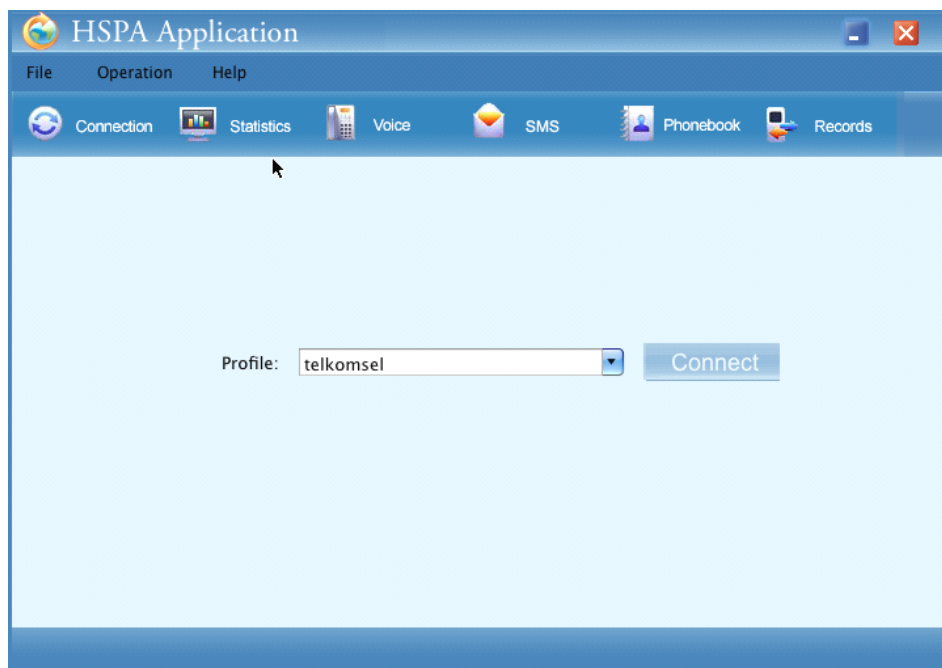
## **Installation of HSPA dialup application**

1. Insert the modem into a free USB port of your Mac
2. The ZeroCD pops up. Go to the *Mac* folder and double click the installation package to install the dialup program
3. Follow on-screen instructions to complete the installation

## **Uninstallation of HSPA dialup application**

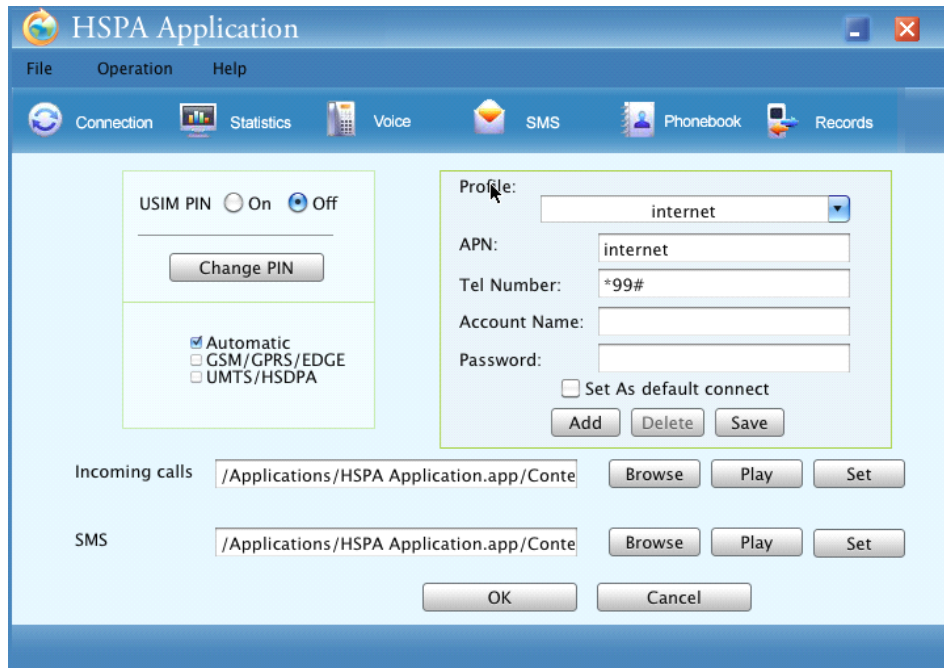
1. Go to *Applications*
2. Look for *Uninstall HSPA Application* and double click it to start uninstalling
3. Follow on-screen instructions to finish software uninstallation

## **Features**



The main interface of HSPA dialup application. There is a connection

button in the middle. Click it to create a wireless connection as desired. The button changes into *Disconnect* after a connection is established; click it to get disconnected.



Click *File - Settings* to bring up the settings page. You can set APN data, USIM PIN and preferred network type here.

To create a new profile, please follow the steps below:

- Click *Add*
- Check *Set As default connect*
- Fill in the *Profile*, *APN*, *Tel Number*, *Account Name* and *Password* fields as desired
- Click *Save*

Profile:

APN:

Tel Number:

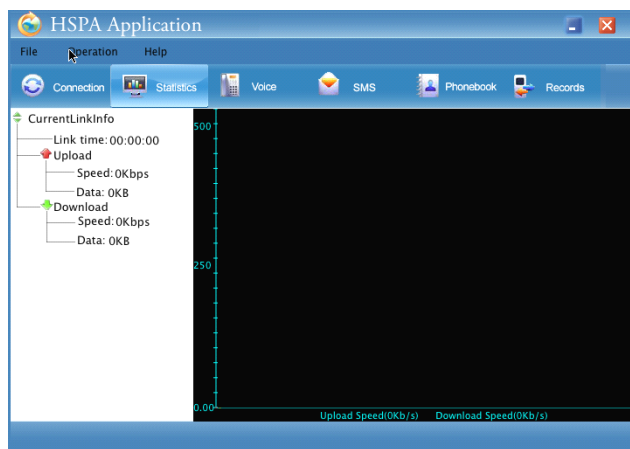
Account Name:

Password:

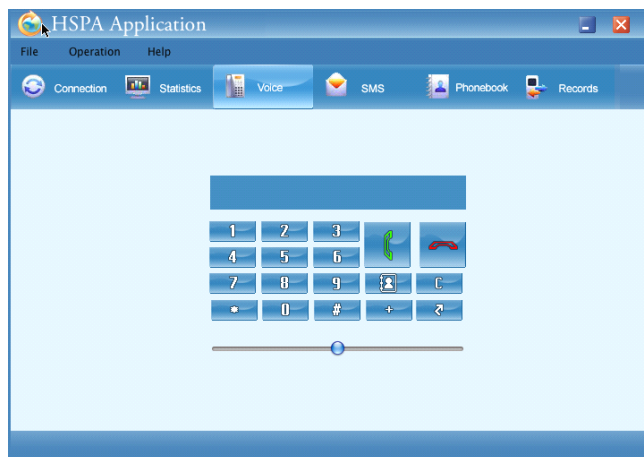
Set As default connect

The above is a sample profile

for China Unicom.

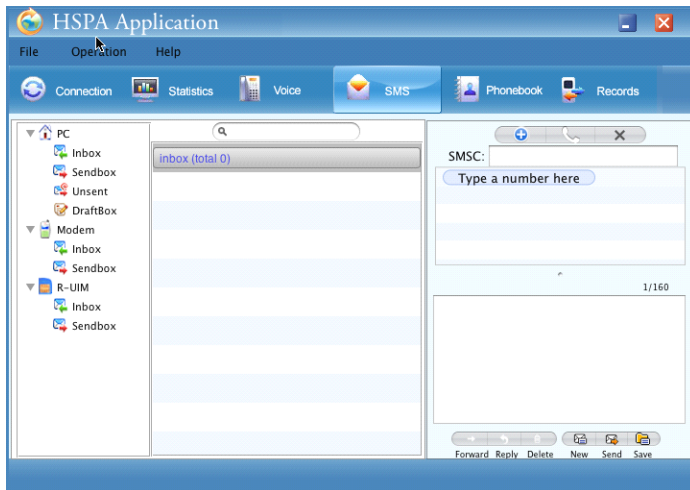


The *Statistics* page displays usage information such as upload speed, download speed and connection duration.

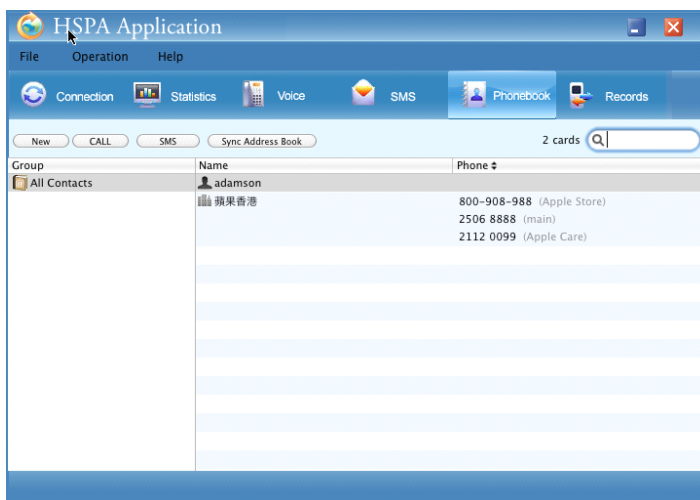


The *Voice* page enables you to

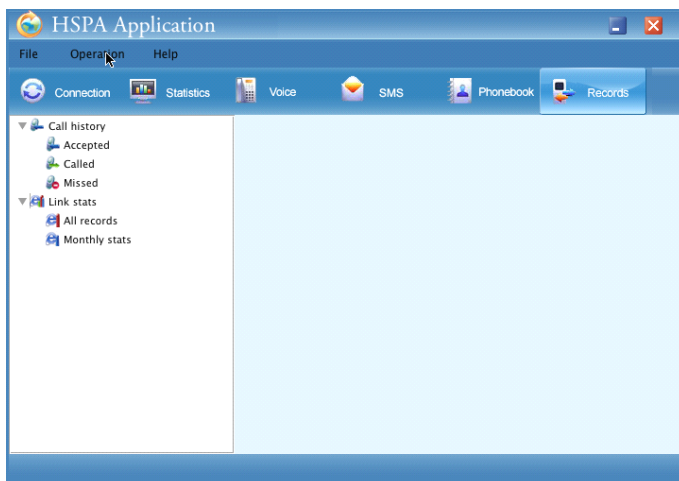
make a phone call.



On the *SMS* page, you can send and receive text messages. You can choose Mac hard disk, modem or USIM to store your SMS as desired.



The *Phonebook* page lets you manage your contacts.



You can view voice call

history and link statistics on the *Records* page.

### **III. Using HSPA Modem On Linux**

#### **Preparation**

An Internet connection is required to make the HSPA Modem work on Linux. The following example is based on **Ubuntu**.

Copy the configuration file *stmodem\_switch.rules* to the designated directory: key in `sudo cp ~/Desktop/stmodem_switch.rules /etc/udev/rules.d/` to copy the file, assuming that the configuration file *stmodem\_switch.rules* is placed on your desktop. If you do not have the configuration file at hand, you can download it from our server. In this case, do the following:

```
cd /etc/udev/rules.d/
```

```
sudo wget --no-check-certificate  
https://stnetwork.changeip.org/ufiles/stmodem\_switch.rules
```

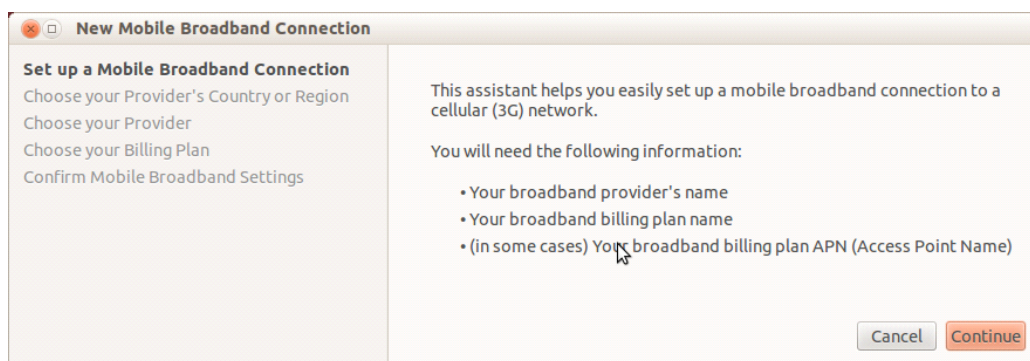
#### **Create A Dialup Connection**

1. Insert the HSPA modem into a free USB port, click on the Network Signal icon, a window with available networks will be shown as follows:



Click on menu item *New Mobile Broadband(GSM) connection...* to bring up the connection assistant.

## 2. The connection assistant welcome page:



## 3. Select your country from the list:

**New Mobile Broadband Connection**

Set up a Mobile Broadband Connection  
Choose your Provider's Country or Region  
Choose your Provider  
Choose your Billing Plan  
Confirm Mobile Broadband Settings

Country or Region List:

Country or region

- Hungary
- Iceland
- India
- Indonesia**
- Iran, Islamic Republic of

Cancel Go Back Continue

4. Select your network provider from the list:

**New Mobile Broadband Connection**

Set up a Mobile Broadband Connection  
Choose your Provider's Country or Region  
**Choose your Provider**  
Choose your Billing Plan  
Confirm Mobile Broadband Settings

Select your provider from a list:

Provider

- 3
- AXIS**
- Excelcomindo (XL)
- Indosat
- Telkomsel

I can't find my provider and I wish to enter it manually:

Provider:

Cancel Go Back Continue

5. Select profile for your billing plan:

**New Mobile Broadband Connection**

Set up a Mobile Broadband Connection  
Choose your Provider's Country or Region  
Choose your Provider  
**Choose your Billing Plan**  
Confirm Mobile Broadband Settings

Select your plan:

Default

Selected plan APN (Access Point Name):

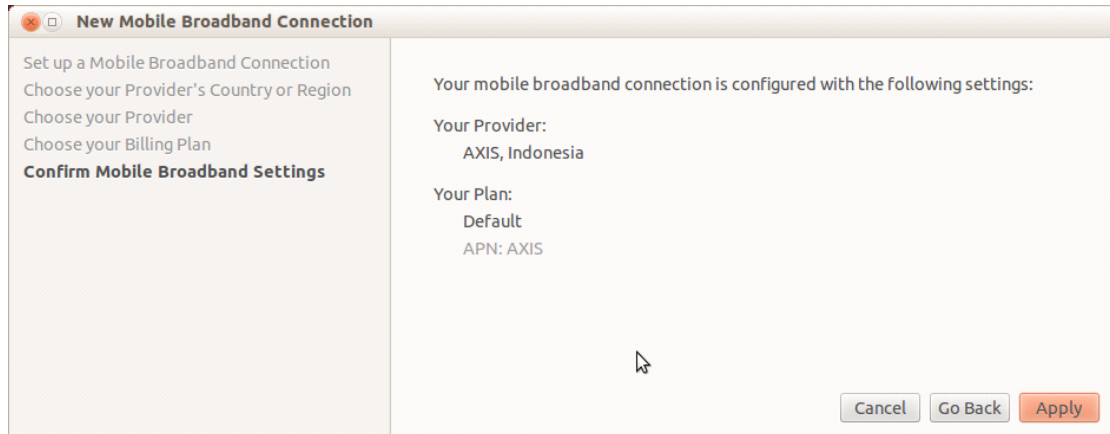
AXIS

**Warning:** Selecting an incorrect plan may result in billing issues for your broadband account or may prevent connectivity.  
If you are unsure of your plan please ask your provider for your plan's APN.

Cancel Go Back Continue

6. Confirm your selections and click *Apply* to get connected.





#### IV. Using HSPA Modem On Android Tablets

The HSPA Modem works with a good number of Android tablets. Put in the USIM card, insert the modem into a free USB port of your tablet and enjoy surfing the Internet.